

VISION SOURCE™

ELLIOTT EYE ASSOCIATES

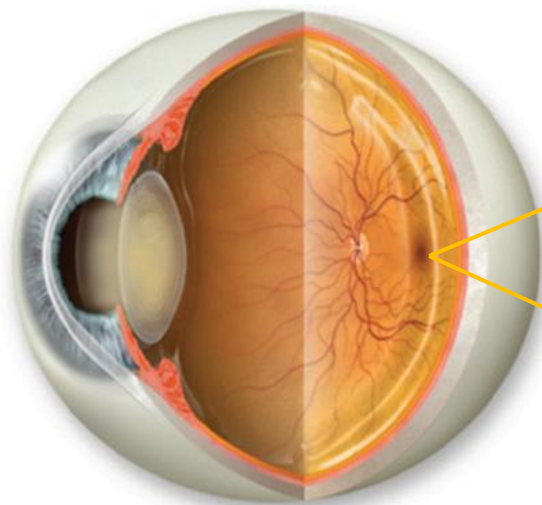
175 S. Denton Tap Rd. Coppel, Texas 75019 (972) 393-8600 www.elliotteye.com

Sight threatening diseases such as glaucoma, macular degeneration, diabetic retinopathy and others often have no outward signs or symptoms, which is why eye exams, including a thorough retinal evaluation, are important to protect vision. In an effort to provide a more thorough eye exam, our practice has incorporated the **iWellnessExam™ SD- OCT retinal scan** and **Optomap® ultra-wide digital retinal imaging** as part of your eye exam today.

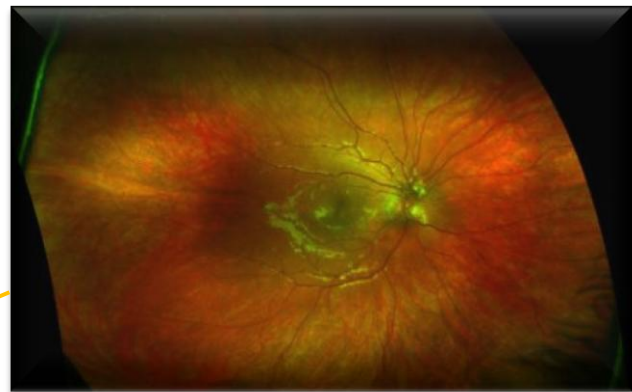
Like an MRI of the eye, but taking only seconds to perform, the **iWellnessExam™** provides high definition cross sections of your retina and optic nerve which can reveal signs of disease in exquisite detail that are invisible to traditional examination methods. **Optomap®** ultra-wide retinal imaging captures wide-field digital images of the back of your eye. Typical examination techniques allow only narrow fields of view, but the **Optomap®** image provides more than 80% of the retina in a single view.

Together, these unique technologies can help detect potentially vision threatening and systemic diseases in their very early stages. They also provide your doctor with a permanent baseline record of your retinal examination for comparison during future exams.

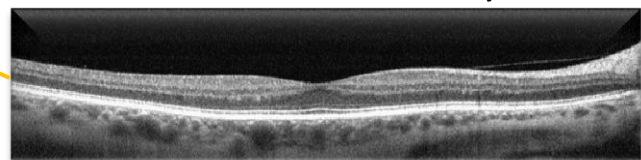
As part of your pre-examination work-up, our technician will perform these two tests which your doctor will review with you during your examination today. The \$49 fee is typically not covered by your medical or vision insurance unless being used to actively follow systemic and/or eye disease. This cost will be added into the price of your visit today. Any questions you have about these tests can be discussed during your examination.



Optomap® ultra-wide digital retinal imaging



iWellnessExam™ SD- OCT Healthy Retina



Unhealthy Retina

